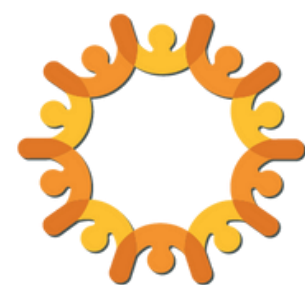


Holistic Learning in Refugee and Immigrant Education

Julie Kasper, Director of Teacher Learning and Leadership
jkasper@ceinternational1892.org



Childhood Education
International



**Center for
Professional Learning**
at Childhood Education International

About CE International

For more than 130 years, Childhood Education International has been building bright futures for every child worldwide.

We collaborate with educators, other education leaders and professionals, researchers, and communities from around the world to **co-design innovative solutions to education challenges** to create positive change in children's lives.

The **Center for Professional Learning** is focused on **supporting educators** with responsive, innovative, and holistic teaching strategies and **lifelong learning through communities of practice**.



**Center for
Professional Learning**
at Childhood Education International



CE International's WILL Action Framework



**Center for
Professional Learning**
at Childhood Education International



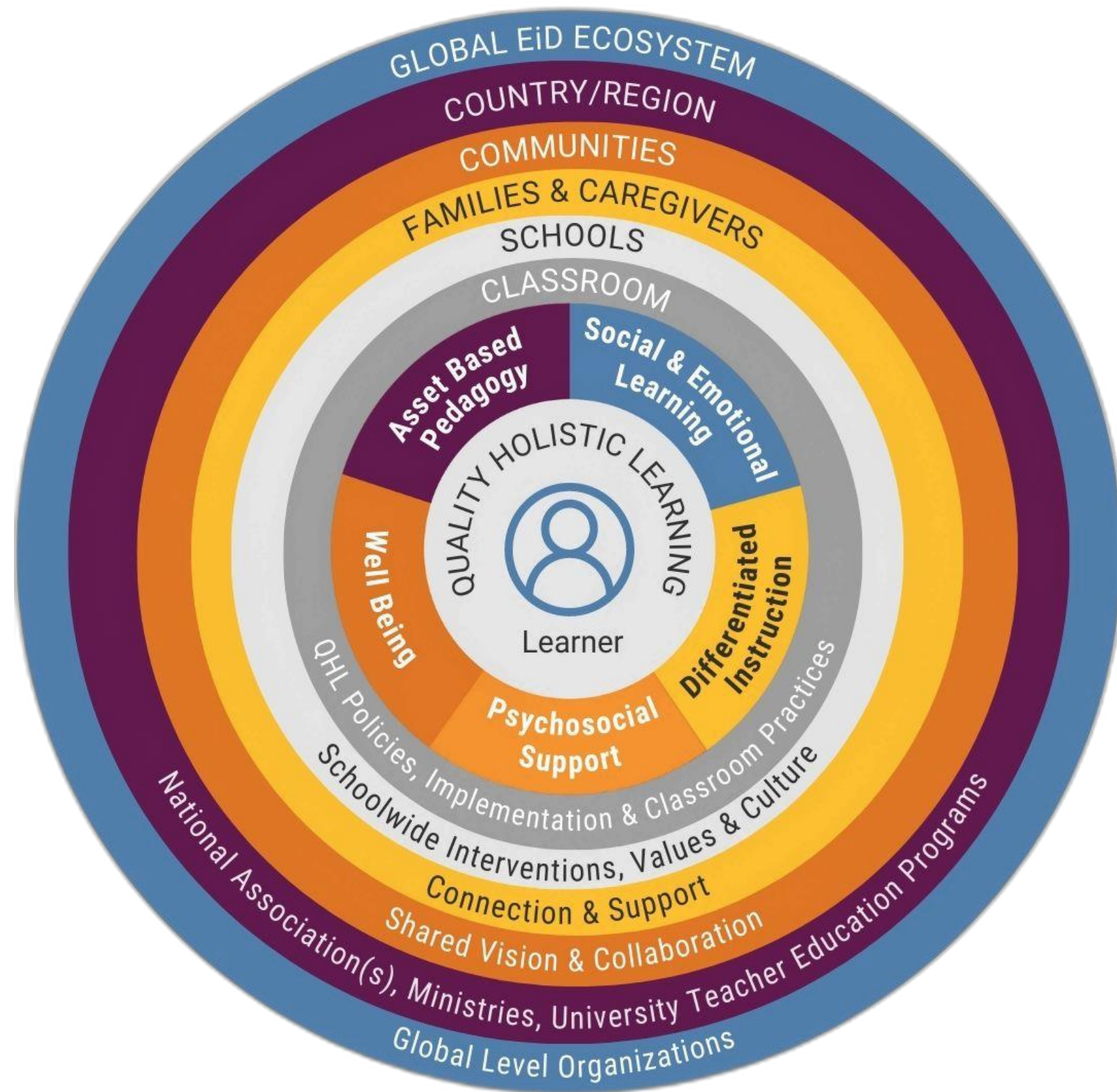
How do you define holistic learning?

What does this bring to mind for you or how is this conceptualized in your teaching and learning context?



**Center for
Professional Learning**
at Childhood Education International

Quality Holistic Learning

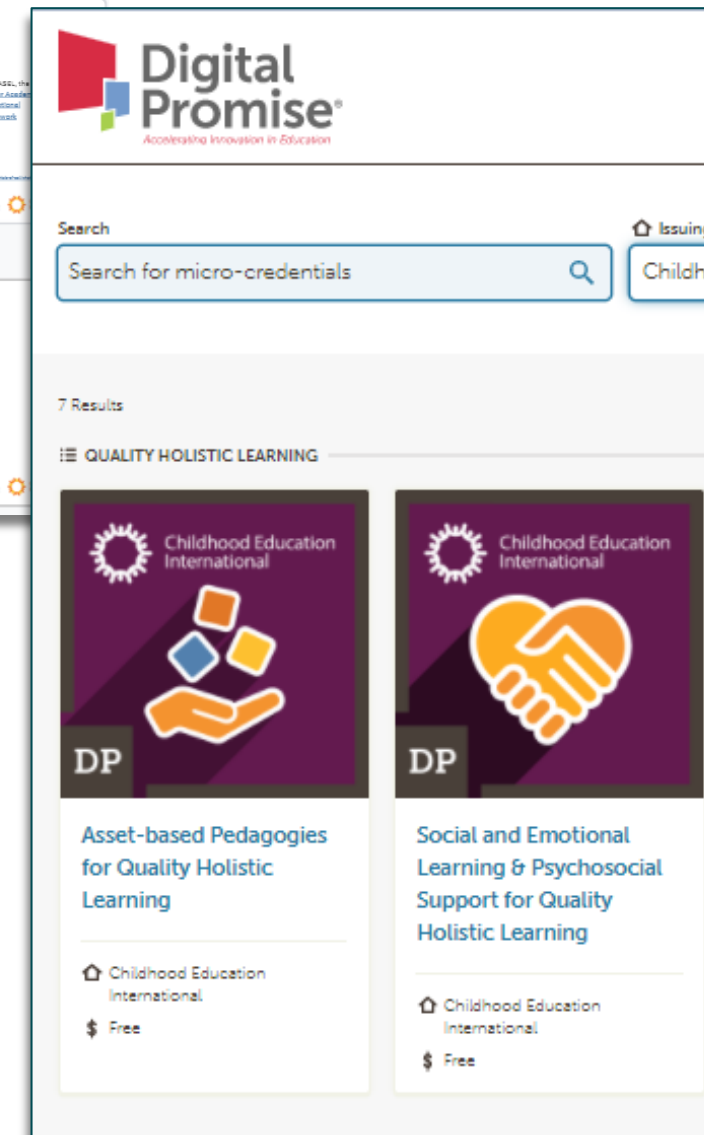
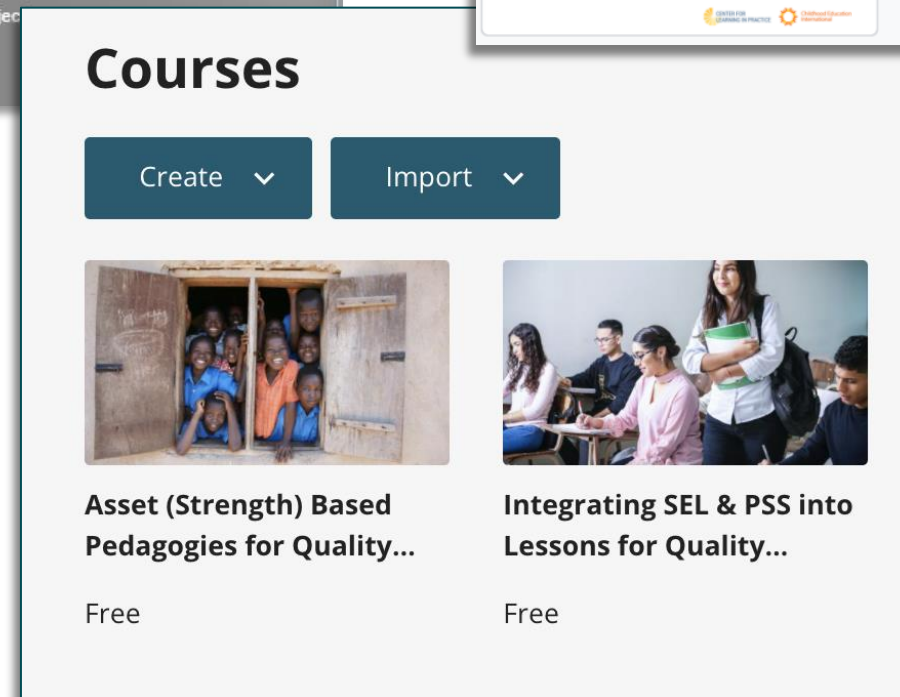
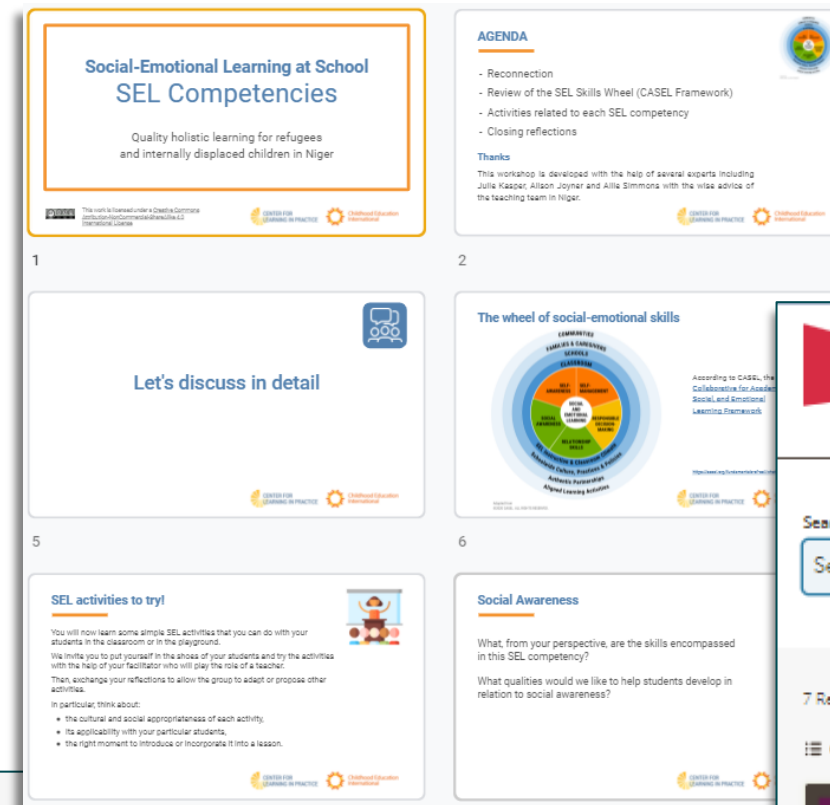
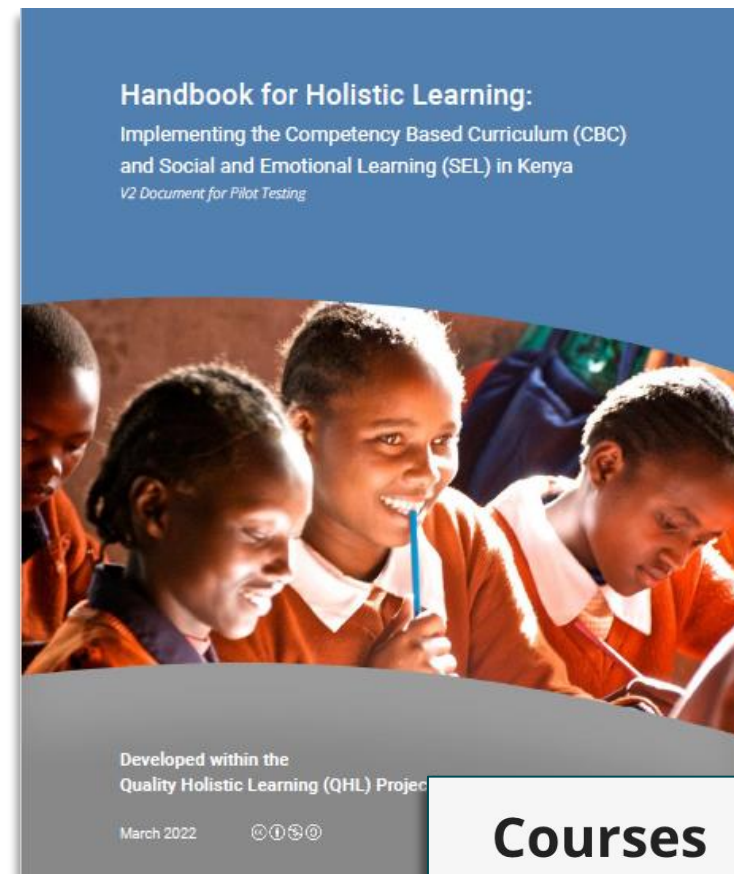


Holistic Learning is a pedagogical approach that takes into account the learner in all their aspects: **academic, emotional, social, physical, and psychological** within a learning program that will allow all learners to develop knowledge, competencies, values, and social skills. - QHL Teacher Fellows in Kenya, Lebanon, and Niger





Open Education Resources

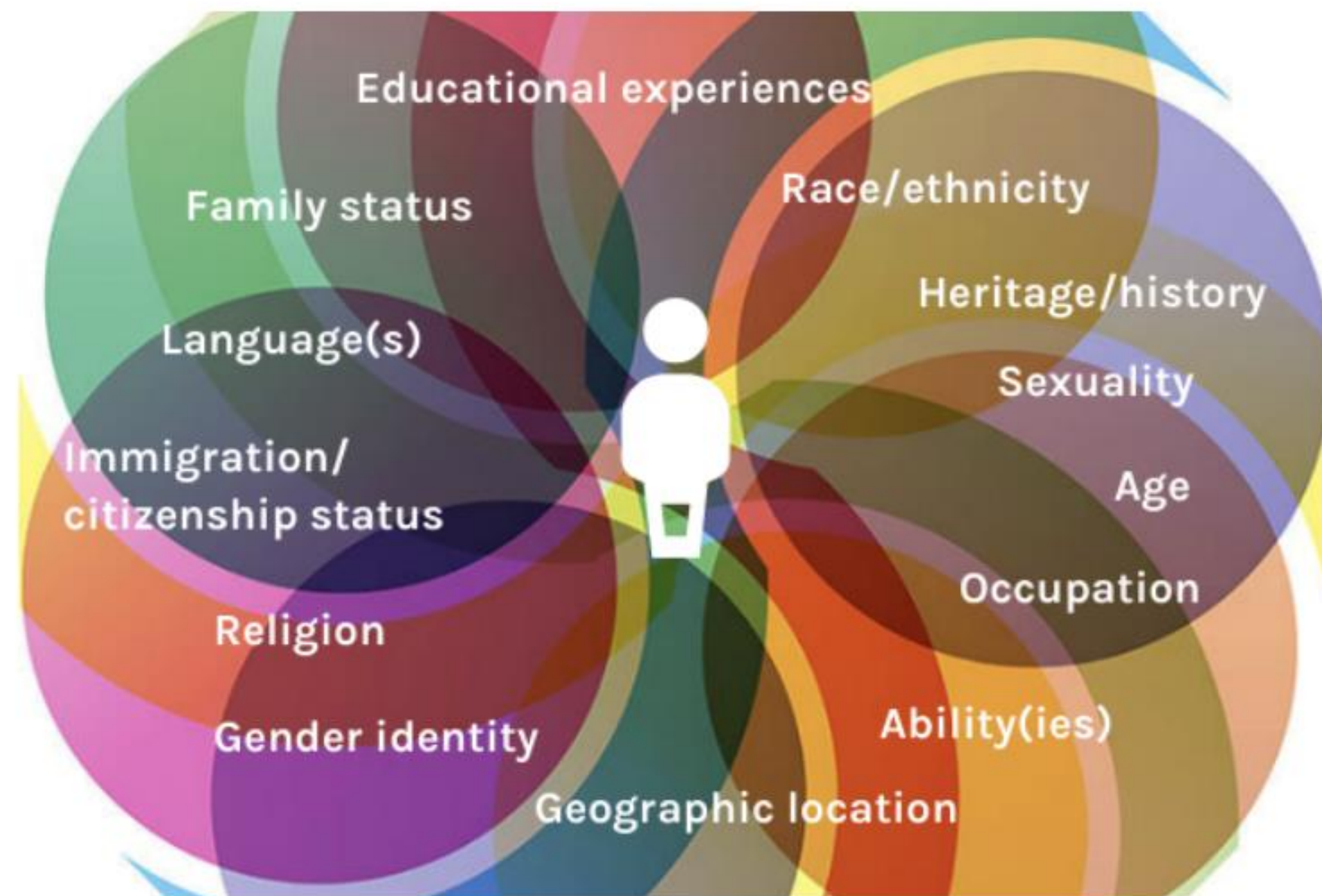


Online Courses
Offline Materials
MicroCredentials
Handbook
Guidance Notes

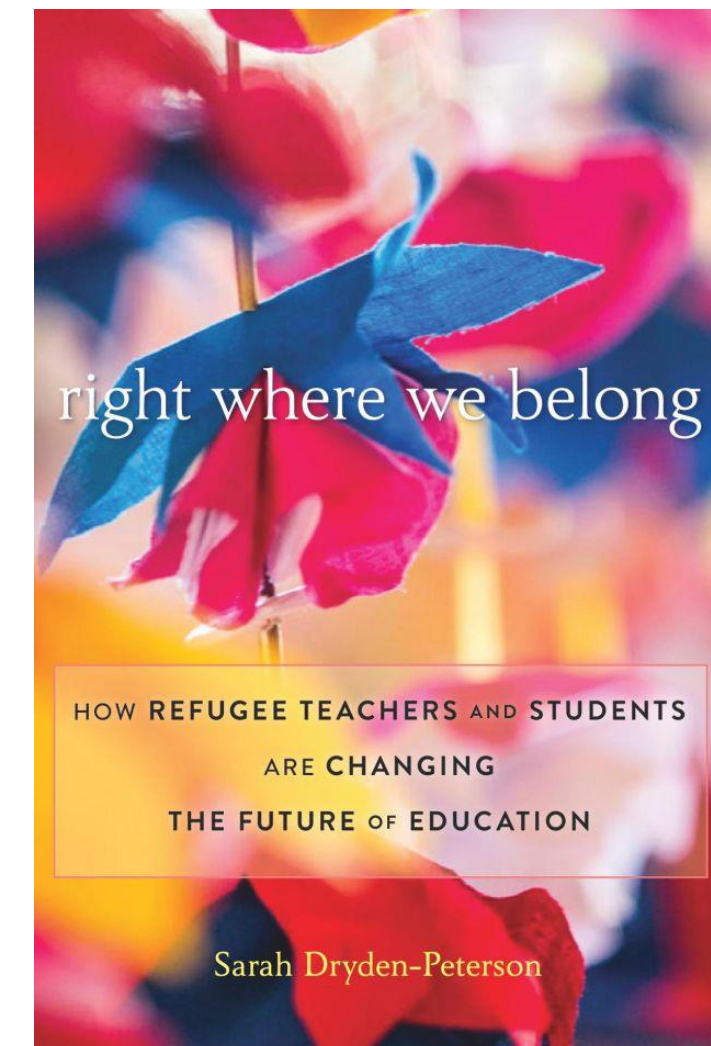
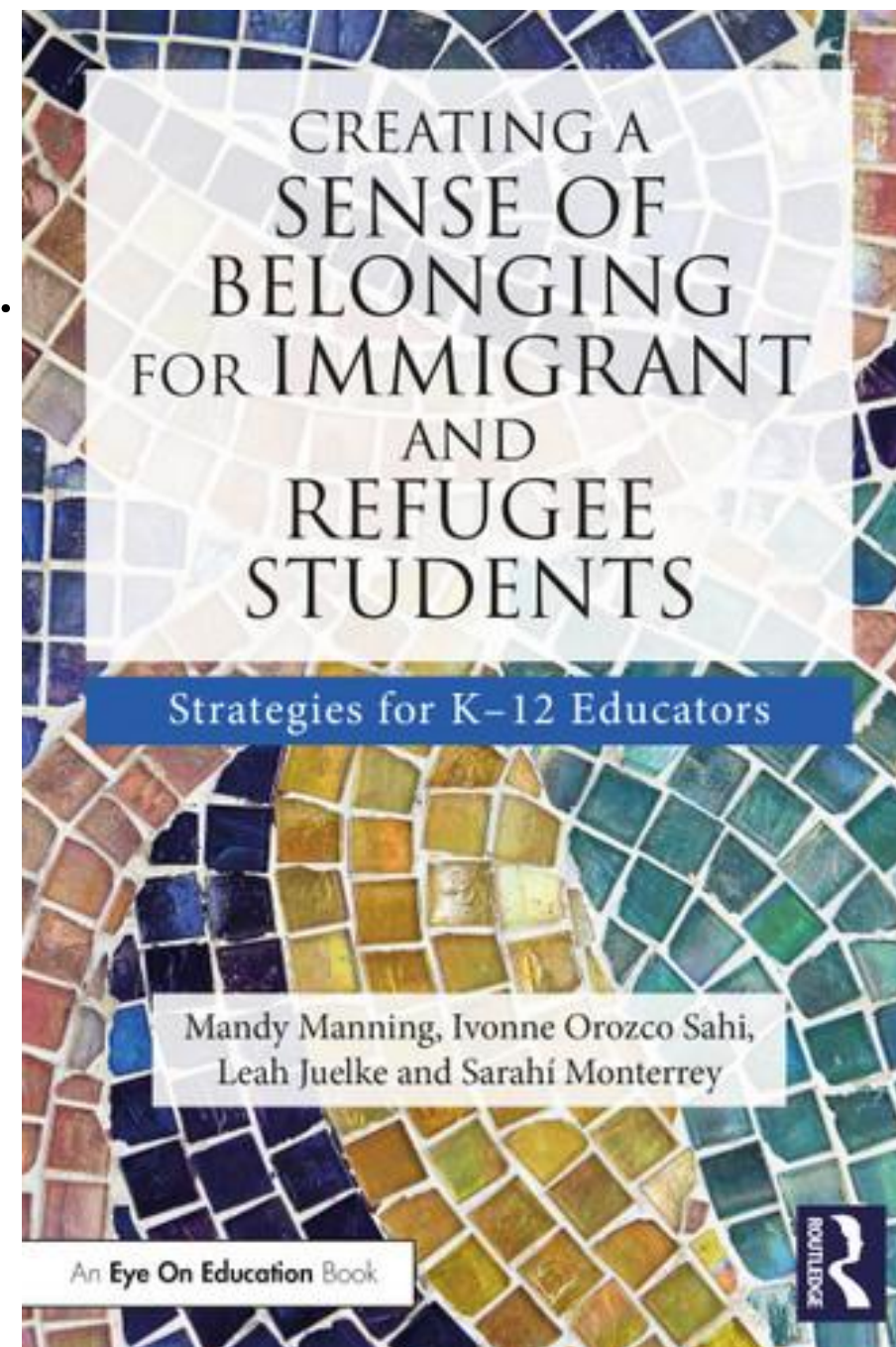
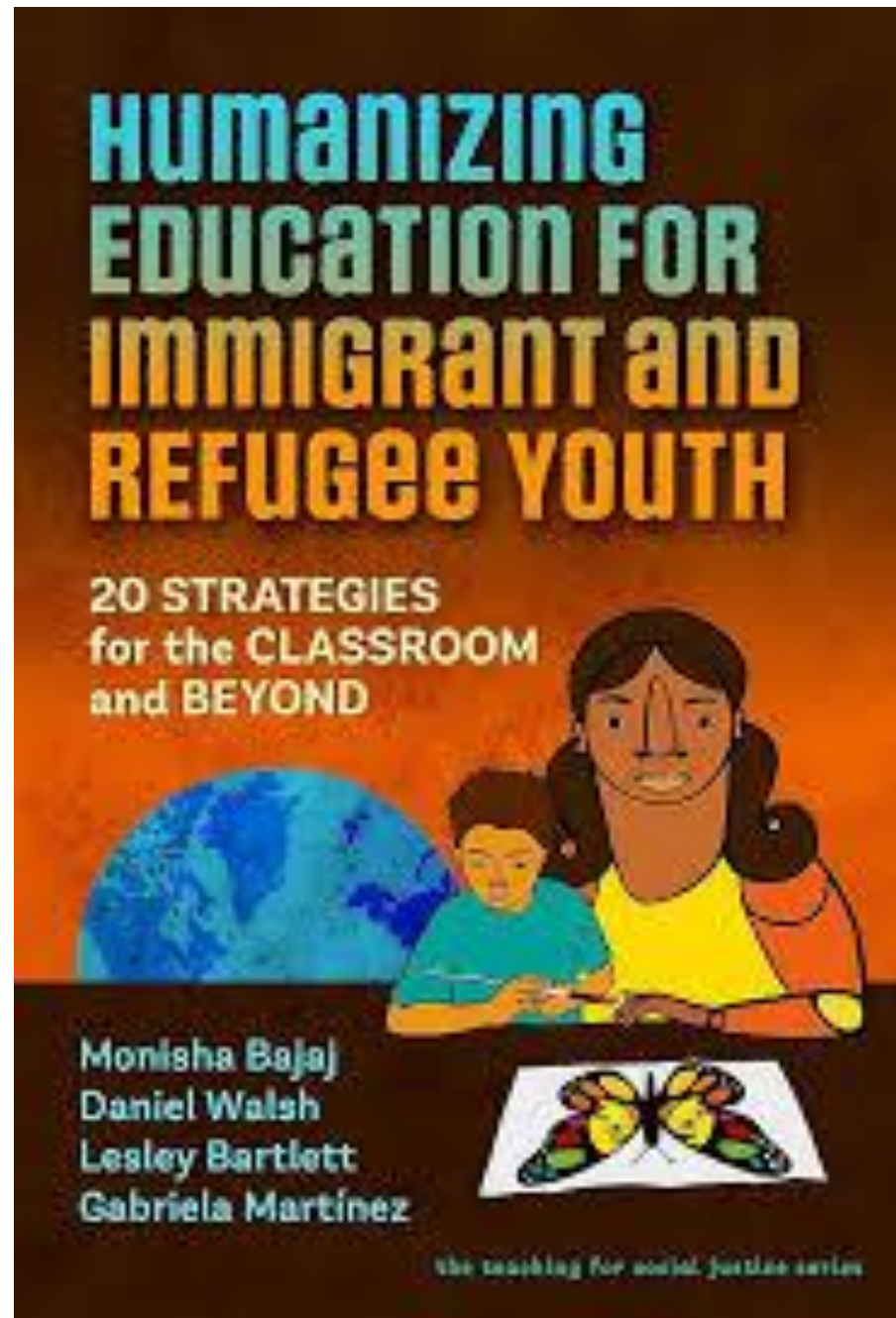


Intersecting Identities & Holistic Learning

immigrant
multilingual transnational minoritized
foreign migrant multicultural
child lazy interrupted future-citizen
diverse bilingual
bicultural fragile
racIALIZED refugee motivated
isolated at-promise
SLIFE EL marginalized ELL
traumatized SIFE integrated
at-risk resilient
student international



Additional Resources



**Center for
Professional Learning**
at Childhood Education International

Welcome & Belonging

- What gives you a feeling of belonging (in a group, school, or community)?
- What creates a sense of unbelonging for you in certain spaces, places, or groups?
- What can be done to create a stronger sense of belonging for immigrant and refugee children, youth, and families in your school or community? What can you do?



Thank you!



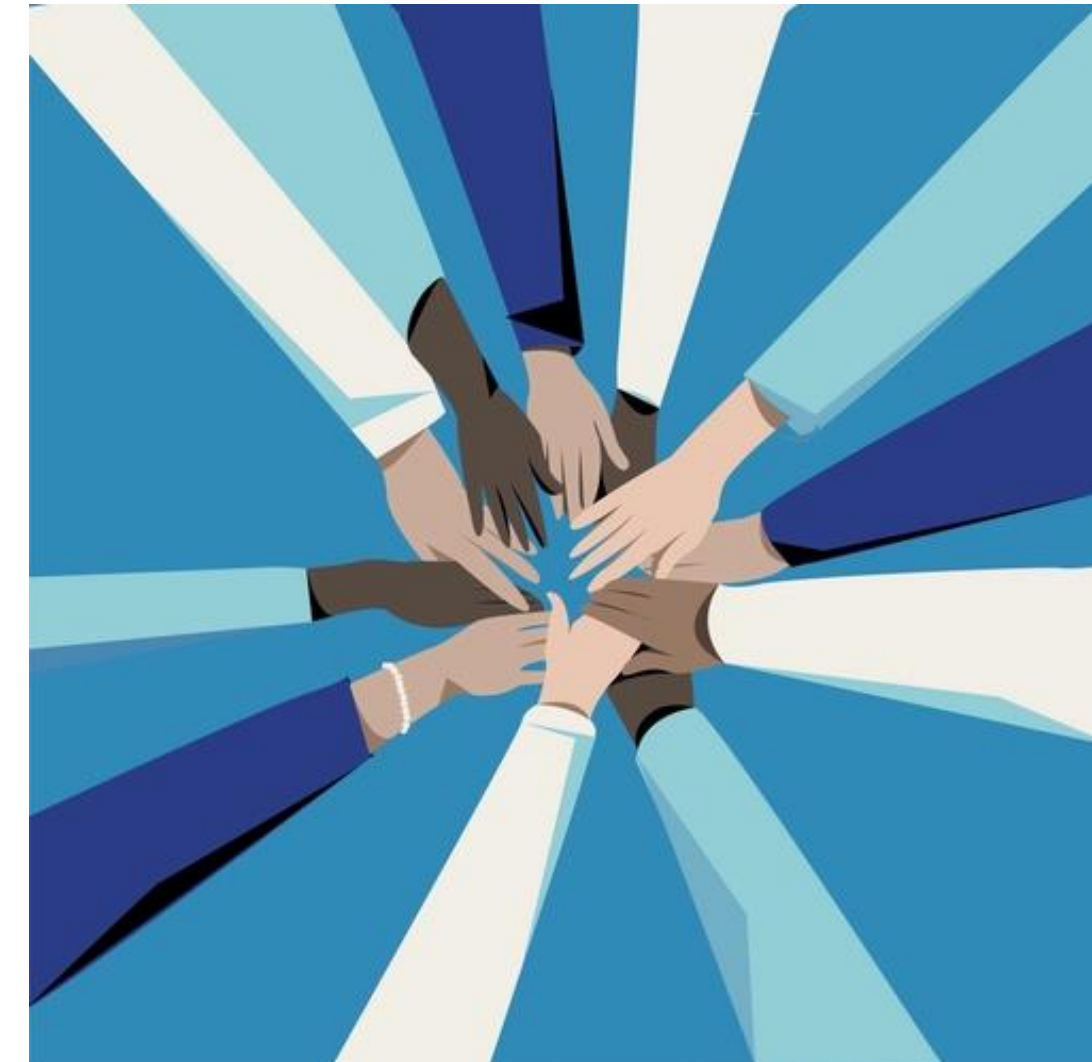
+1 520-405-2433



www.ceinternational1892.org



jkasper@ceinternational1892.org



**Center for
Professional Learning**
at Childhood Education International